

## Natural changes of population 1961 – 2022

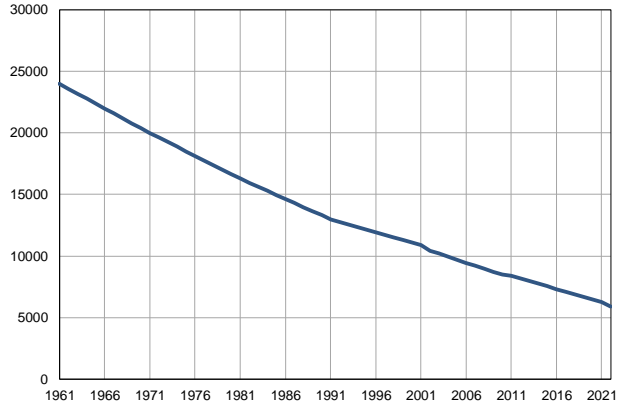
Profile  
July 2023

### Gadžin Han

	1961	2022
Population size	23965	5889
Livebirths, Number	400	35
Deaths, Number	173	173
Natural increase, Number	227	-138
Infants deaths, Number	25	0
Livebirths, per 1,000 population	17	6
Deaths, per 1,000 population	7	29
Natural increase, per 1,000 population	10	-23
Infants deaths, per 1,000 livebirths	63	0

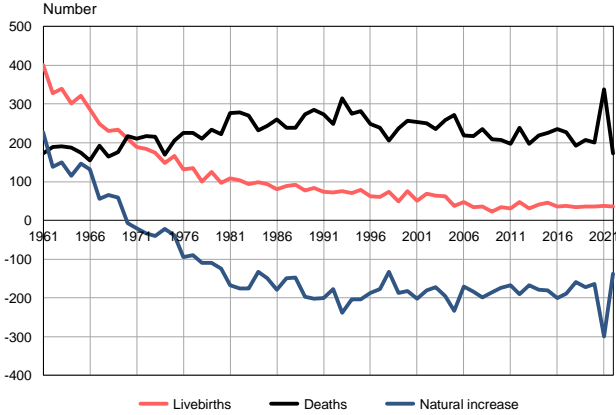
Source: Vital Statistics, SORS

Population size, 1961–2022



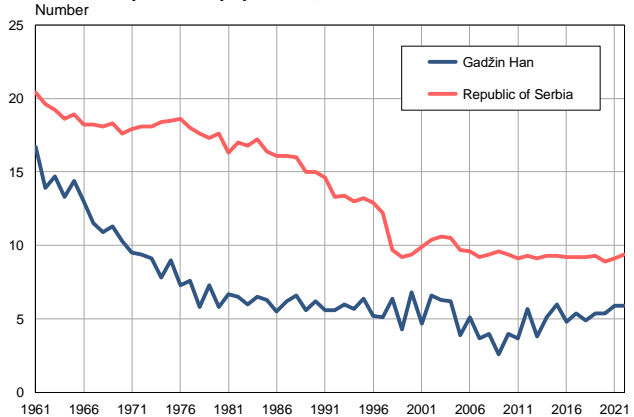
Source: Vital Statistics, SORS

Livebirths, deaths and natural increase, 1961–2022



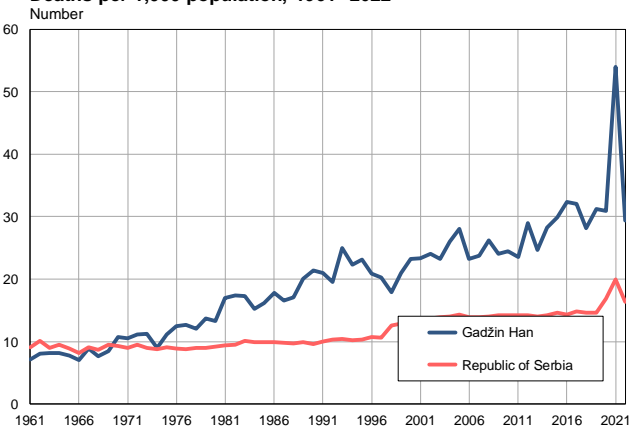
Source: Vital Statistics, SORS

Livebirths per 1,000 population, 1961–2022



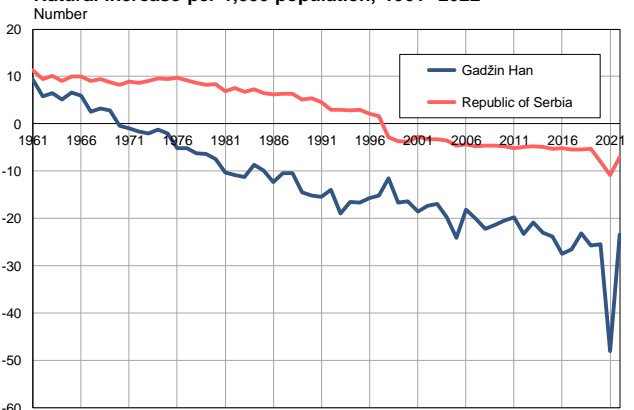
Source: Vital Statistics, SORS

Deaths per 1,000 population, 1961–2022



Source: Vital Statistics, SORS

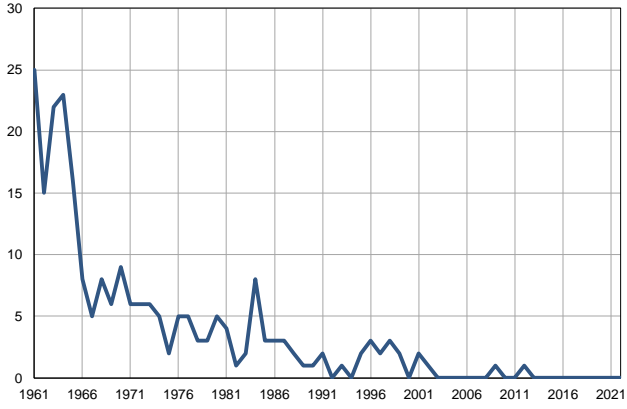
Natural increase per 1,000 population, 1961–2022



Source: Vital Statistics, SORS

**Infants deaths, 1961–2022**

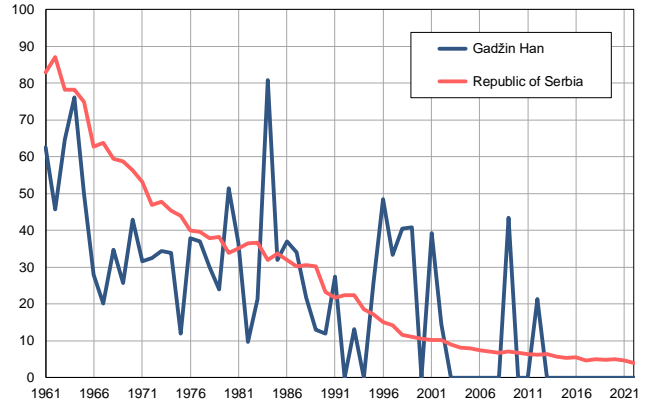
Number



Source: Vital Statistics, SORS

**Infants deaths per 1,000 livebirths, 1961–2022**

Number



Source: Vital Statistics, SORS

**Table. Natural changes of population, Gadžin Han**

Year	Number of population	Livebirths	Deaths	Natural increase	Infants deaths	per 1000 population			Infant deaths per 1000 livebirths
						Livebirths	Deaths	Natural increase	
1961	23965	400	173	227	25	16.7	7.2	9.5	62.5
1962	23566	328	190	138	15	13.9	8.1	5.8	45.7
1963	23167	340	191	149	22	14.7	8.2	6.5	64.7
1964	22768	302	187	115	23	13.3	8.2	5.1	76.2
1965	22369	321	174	147	16	14.4	7.8	6.6	49.8
1966	21970	286	154	132	8	13.0	7.0	6.0	28.0
1967	21570	249	193	56	5	11.5	8.9	2.6	20.1
1968	21171	230	164	66	8	10.9	7.7	3.2	34.8
1969	20772	234	176	58	6	11.3	8.5	2.8	25.6
1970	20373	210	218	-8	9	10.3	10.7	-0.4	42.9
1971	19974	190	210	-20	6	9.5	10.5	-1.0	31.6
1972	19605	185	218	-33	6	9.4	11.1	-1.7	32.4
1973	19235	175	216	-41	6	9.1	11.2	-2.1	34.3
1974	18866	148	170	-22	5	7.8	9.0	-1.2	33.8
1975	18497	166	205	-39	2	9.0	11.1	-2.1	12.0
1976	18127	132	226	-94	5	7.3	12.5	-5.2	37.9
1977	17758	135	225	-90	5	7.6	12.7	-5.1	37.0
1978	17389	100	210	-110	3	5.8	12.1	-6.3	30.0
1979	17020	125	234	-109	3	7.3	13.7	-6.4	24.0
1980	16650	97	222	-125	5	5.8	13.3	-7.5	51.5
1981	16281	109	277	-168	4	6.7	17.0	-10.3	36.7
1982	15952	103	278	-175	1	6.5	17.4	-10.9	9.7
1983	15623	94	270	-176	2	6.0	17.3	-11.3	21.3
1984	15294	99	232	-133	8	6.5	15.2	-8.7	80.8
1985	14965	94	243	-149	3	6.3	16.2	-9.9	31.9
1986	14636	81	260	-179	3	5.5	17.8	-12.3	37.0
1987	14306	88	238	-150	3	6.2	16.6	-10.4	34.1
1988	13977	92	239	-147	2	6.6	17.1	-10.5	21.7
1989	13648	77	274	-197	1	5.6	20.1	-14.5	13.0
1990	13319	83	285	-202	1	6.2	21.4	-15.2	12.0
1991	12990	73	273	-200	2	5.6	21.0	-15.4	27.4
1992	12778	72	249	-177	0	5.6	19.5	-13.9	0.0
1993	12566	76	314	-238	1	6.0	25.0	-19.0	13.2
1994	12355	71	275	-204	0	5.7	22.3	-16.6	0.0
1995	12143	78	281	-203	2	6.4	23.1	-16.7	25.6
1996	11931	62	249	-187	3	5.2	20.9	-15.7	48.4
1997	11719	60	238	-178	2	5.1	20.3	-15.2	33.3
1998	11507	74	206	-132	3	6.4	17.9	-11.5	40.5
1999	11295	49	237	-188	2	4.3	21.0	-16.7	40.8
2000	11084	75	257	-182	0	6.8	23.2	-16.4	0.0
2001	10872	51	253	-202	2	4.7	23.3	-18.6	39.2
2002	10414	69	250	-181	1	6.6	24.0	-17.4	14.5
2003	10189	64	236	-172	0	6.3	23.2	-16.9	0.0
2004	9938	62	258	-196	0	6.2	26.0	-19.8	0.0
2005	9676	38	271	-233	0	3.9	28.0	-24.1	0.0

**Table. Natural changes of population, Gadžin Han**

Year	Number of population	Livebirths	Deaths	Natural increase	Infants deaths	per 1000 population			Infant deaths per 1000 livebirths
						Livebirths	Deaths	Natural increase	
2006	9445	48	219	-171	0	5.1	23.2	-18.1	0.0
2007	9216	34	218	-184	0	3.7	23.7	-20.0	0.0
2008	8967	36	235	-199	0	4.0	26.2	-22.2	0.0
2009	8726	23	209	-186	1	2.6	24.0	-21.4	43.5
2010	8505	34	208	-174	0	4.0	24.5	-20.5	0.0
2011	8415	31	198	-167	0	3.7	23.5	-19.8	0.0
2012	8202	47	238	-191	1	5.7	29.0	-23.3	21.3
2013	7990	30	197	-167	0	3.8	24.7	-20.9	0.0
2014	7767	40	219	-179	0	5.1	28.2	-23.0	0.0
2015	7535	45	225	-180	0	6.0	29.9	-23.9	0.0
2016	7317	35	236	-201	0	4.8	32.3	-27.5	0.0
2017	7098	38	227	-189	0	5.4	32.0	-26.6	0.0
2018	6879	34	193	-159	0	4.9	28.1	-23.1	0.0
2019	6664	36	208	-172	0	5.4	31.2	-25.8	0.0
2020	6480	35	200	-165	0	5.4	30.9	-25.5	0.0
2021	6240	37	337	-300	0	5.9	54.0	-48.1	0.0
2022	5889	35	173	-138	0	5.9	29.4	-23.4	0.0

Source: Vital Statistics, SORS

## Definitions

### Population size

Number of population in the respective year. The data on the number of population in 1961, 1971, 1981 and 1991 are census data, while for the inter-census years the number of population was calculated as an average inter-census difference. From 2002 are given the population estimates that were calculated according to the census of population results and the annual statistics of natural mechanical population movements.

### Livebirths

Absolute number of live births in the course of a year. Live born child means a child giving vital signs after birth (breathing, i.e. heartbeat), even for the shortest time, regardless the mother's pregnancy duration.

### Deaths

Absolute number of deaths in the course of a year. Deceased is a person that whenever after having been born live, shows permanently stopped vital signs.

### Natural increase

Natural population increase is the number of live births minus the number of deaths.

### Infants deaths

Absolute number of infants deaths in the course of a year. Deceased infant is a child that after having been born live and before aged one year, shows permanently stopped vital signs.

### Livebirths, per 1 000 population

Livebirths rate is the ratio of the number of live births and the population size in the respective year. The number of live births is divided by the population size and then multiplied by 1000.

### Deaths, per 1 000 population

General mortality rate represents the ratio between the number of deaths and the population size in the respective year. The number of deaths is divided by population size and then multiplied by 1000.

### Natural increase, per 1 000 population

Natural population increase rate is the difference between the number of live births and the number of deaths, in relation to the population size in the respective year.

Natural population increase rate = (number of live births - number of deaths) / population size \* 1000

### Infants deaths, per 1 000 livebirths

Infant mortality rate is the ratio of deceased children under 1 year of age and live births in the respective year. The mortality rate is expressed per 1000 live births.

Infant mortality rate = (number of deceased children under 1 year of age / number of live births) \* 1000

## Additional info:



Download all database data in Excel format:

[Data](#)



DevInfo profiles:

[devinfo.stat.gov.rs/SerbiaProfileLauncher/?lang=en](http://devinfo.stat.gov.rs/SerbiaProfileLauncher/?lang=en)



DevInfo online database:

[devinfo.stat.gov.rs/vitalna](http://devinfo.stat.gov.rs/vitalna)



For additional information or questions please contact:

[devinfo@stat.gov.rs](mailto:devinfo@stat.gov.rs)